

# MORNING SESSION

BIRMINGHAM

SEPT 2024



## ASSESSMENT IN THE AGE OF AI: IS IT TIME TO RETHINK TESTING?

JOHN MASKREY

Senior Digital Product Developer  
BCS, The Chartered Institute for IT



**skilltech**  
SOLUTIONS

In partnership with

**risr/**

## HEADLINE SPONSOR

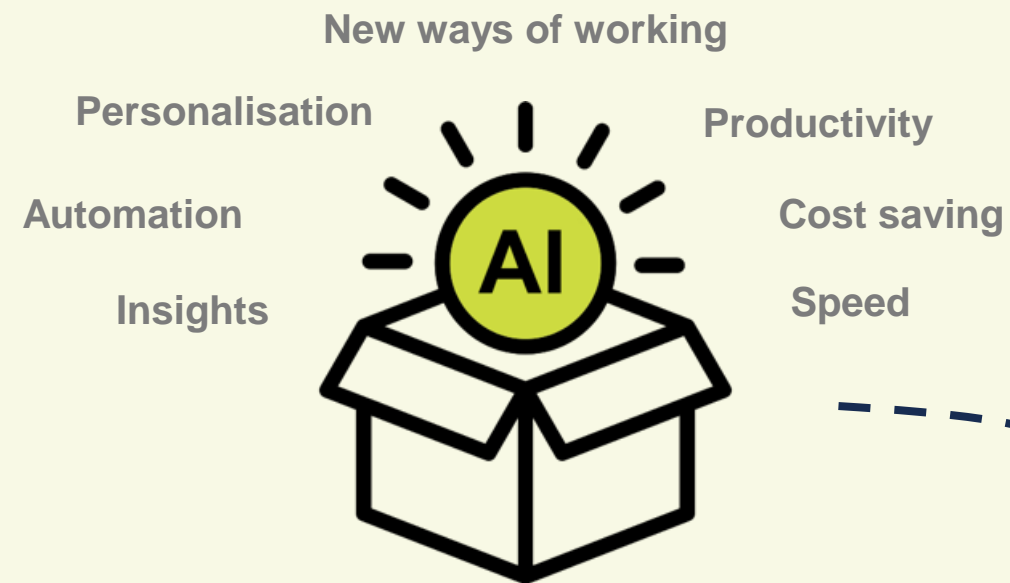


# Assessment in the age of AI: Is it time to rethink testing?

**John Maskrey**

Senior Digital Product Developer at BCS, The Chartered Institute for IT

# Why we might want to innovate with AI...



What are the **capabilities**?  
What are the **opportunities**?  
What are the **benefits**?

Gartner Top Technology Trends for 2024+



- AI-augmented development
- Intelligent applications
- AI Trust, Risk and Security Management
- Machine customers
- Sustainable technology
- And more....



# The genie is out of the bottle...

The Future of Jobs Report 2023 indicates that by 2027, **43%** of work tasks will be automated.



# Augmented roles

Human Intelligence (**HI**), Artificial Intelligence (**AI**), Collective Intelligence (**CI**)



**Engineer**



**Customer service  
advisor**



**Software Developer**

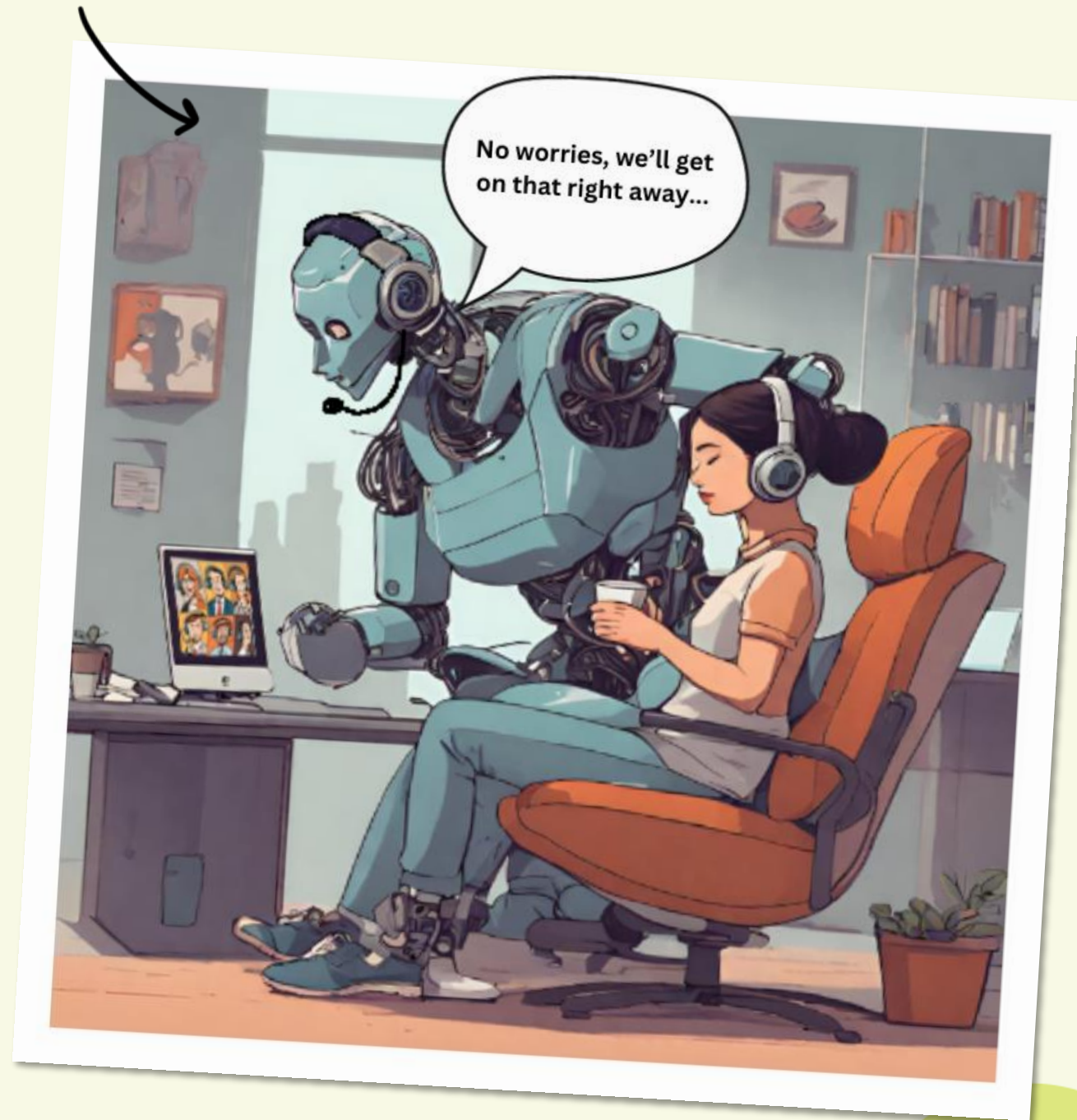


**Teacher**



Art generated by Canva... using human input with some further manual tweaking!

# Augmented intelligence



# Uses of AI in assessment



Content creation  
(Scenarios, media,  
tasks)



Item authoring



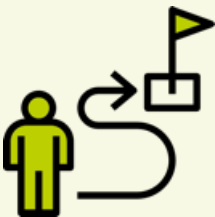
What are the **capabilities**?  
What are the **opportunities**?  
What are the **benefits**?



Automated  
marking and  
feedback



Performance  
insights



Personalised  
assessments



Tools to assist the  
learner



Simulation and  
observation



Invigilation and  
support

# Is AI a threat?

Is it safe to use?

Will it be fair?

Will learners be able to cheat?

How will it impact my role?



# Our own explorations...



## Innovating ethically with AI



View the learning objectives for this section



**Module 2: Innovating With AI To Drive Business Change**

**Done:** Receive a grade



**Scenario: The Use Of AI In Policing**

**To do:** Complete all questions

## Privacy, governance, and policy in AI



# Scenario 1: The use of AI in policing

- 1
- 2
- 3

## Q3: Incomplete

### You have been asked :

Scenario:

A large inner city police department has recently adopted an AI-powered predictive policing system to enhance its law enforcement operations. This system uses AI algorithms to analyse historical crime data and data captured from surveillance cameras using facial recognition, as well as other sources. This analysis is used to predict areas with a higher likelihood of criminal activity.

The department has embraced this technology with the aim of improving public safety and allocating their stretched resources more effectively.

Describe two ethical concerns that people might have about the use of this type of system.

### Enter your answer below :

Ethical concern 1:

Ethical concern 2:

**SUBMIT ANSWER**

# Scenario 1: The use of AI in policing

- 1
- 2
- 3

## Q3: Incomplete

### You have been asked :

Scenario:

A large inner city police department has recently adopted an AI-powered predictive policing system to enhance its law enforcement operations. This system uses AI algorithms to analyse historical crime data and data captured from surveillance cameras using facial recognition, as well as other sources. This analysis is used to predict areas with a higher likelihood of criminal activity.

The department has embraced this technology with the aim of improving public safety and allocating their stretched resources more effectively.

Describe two ethical concerns that people might have about the use of this type of system.

### Enter your answer below :

Ethical concern 1:

The historical crime data used to train the AI system may contain biases that perpetuate discrimination, leading to over-policing in certain communities and potential civil rights violations.

Ethical concern 2:

**SUBMIT ANSWER**



# Scenario 1: The use of AI in policing

- 1
- 2
- 3

## Q3: Incomplete

### You have been asked :

Scenario:

A large inner city police department has recently adopted an AI-powered predictive policing system to enhance its law enforcement operations. This system uses AI algorithms to analyse historical crime data and data captured from surveillance cameras using facial recognition, as well as other sources. This analysis is used to predict areas with a higher likelihood of criminal activity.

The department has embraced this technology with the aim of improving public safety and allocating their stretched resources more effectively.

Describe two ethical concerns that people might have about the use of this type of system.

### Enter your answer below :

Ethical concern 1:

The historical crime data used to train the AI system may contain biases that perpetuate discrimination, leading to over-policing in certain communities and potential civil rights violations.

Ethical concern 2:

There is the risk of a large gorilla with laser eyes destroying the city.

**SUBMIT ANSWER**



# Scenario 1: The use of AI in policing

- 1
- 2
- 3

## Q3: Incomplete

### You have been asked :

Scenario:

A large inner city police department has implemented a new AI system to analyze crime data. The system uses AI algorithms to analyze historical crime data and predict areas of high crime risk. The department has received a report that the system is being used to predict areas of high crime risk.

The department has received a report that the system is being used to predict areas of high crime risk.

Describe two ethical concerns that you think could arise from the use of this system.

Are you sure?



You will not be able to edit your answer after it has been submitted for tutor.

Yes, submit

Close

### Enter your answer below:

Ethical concern 1:

The historical crime data used to train the AI system may contain biases that perpetuate discrimination, leading to over-policing in certain communities and potential civil rights violations.

Ethical concern 2:

There is the risk of a large gorilla with laser eyes destroying the city.

SUBMIT ANSWER

**Your answer :**

**Ethical concern 1:**

The historical crime data used to train the AI system may contain biases that perpetuate discrimination, leading to over-policing in certain communities and potential civil rights violations.

**Ethical concern 2:**

There is the risk of a large gorilla with laser eyes destroying the city.

**Tutor's feedback :**

Mark: 1.

Feedback: Your answer only includes one relevant ethical concern, which is good, but you were asked to provide two. It is important to fully answer the question and provide all the information requested. In addition to the concern you mentioned, some other ethical concerns about the use of AI in policing could include the potential for the system to reinforce existing biases and discrimination, as well as the lack of transparency and accountability in the decision-making process. To improve your answer, make sure to fully answer the question and provide specific examples to support your points. You could also consider researching and including other potential ethical concerns, such as the potential for misuse of the technology or invasion of privacy.

**Your comments:**

Consider provided feedback and reflect on it here

Your rating: 

**SUBMIT FEEDBACK**

**Your answer :**

**Ethical concern 1:**

The historical crime data used to train the AI system may contain biases that perpetuate discrimination, leading to over-policing in certain communities and potential civil rights violations.

**Ethical concern 2:**

There is the risk of a large gorilla with laser eyes destroying the city.

**Tutor's feedback :**

Mark: 1.

Feedback: Your answer only includes one relevant ethical concern, which is good, but you were asked to provide two. It is important to fully answer the question and provide all the information requested. In addition to the concern you mentioned, some other ethical concerns about the use of AI in policing could include the potential for the system to reinforce existing biases and discrimination, as well as the lack of transparency and accountability in the decision-making process. To improve your answer, make sure to fully answer the question and provide specific examples to support your points. You could also consider researching and including other potential ethical concerns, such as the potential for misuse of the technology or invasion of privacy.

**Your comments:**

Consider provided feedback and reflect on it here

Useful feedback, I'll aim to do that in my next attempt. There's no fooling this AI!

**Your rating:**



**Your answer :**

**Ethical concern 1:**

The historical crime data used to train the AI system may contain biases that perpetuate discrimination, leading to over-policing in certain communities and potential civil rights violations.

**Ethical concern 2:**

There is the risk of a large gorilla with laser eyes destroying the city.

**Tutor's feedback :**

Mark: 1.

Feedback: Your answer only includes one relevant ethical concern, which is good, but you were asked to provide two. It is important to fully answer the question and provide all the information requested. In addition to the concern you mentioned, some other ethical concerns about the use of AI in policing could include the potential for the system to reinforce existing biases and discrimination, as well as the lack of transparency and accountability in the decision-making process. To improve your answer, make sure to fully answer the question and provide specific examples to support your points. You could also consider researching and including other potential ethical concerns, such as the potential for misuse of the technology or invasion of privacy.

**Your comments:**

Consider provided feedback and reflect on it here

Useful feedback, I'll aim to do that in my next attempt. There's no fooling this AI!

Your rating:

**SUBMIT FEEDBACK**

**Your answer :****Ethical concern 1:**

The historical crime data used to train the AI system may contain biases that perpetuate discrimination, leading to over-policing in certain communities and potential civil rights violations.

**Ethical concern 2:**

There is the risk of a large gorilla with laser eyes destroying the city.

**Tutor's feedback :**

Mark: 1.

Feedback: Your answer only includes one relevant ethical concern, which is good, but you were asked to provide two. It is important to fully answer the question and provide all the information requested. In addition to the concern you mentioned, some other ethical concerns about the use of AI in policing could include the potential for the system to reinforce existing biases and discrimination, as well as the lack of transparency and accountability in the decision-making process. To improve your answer, make sure to fully answer the question and provide specific examples to support your points. You could also consider researching and including other potential ethical concerns, such as the potential for misuse of the technology or invasion of privacy.

**Your comments:**

Useful feedback, I'll aim to do that in my next attempt. There's no fooling this AI!

**Your rating:** 

# An earlier example...

**Ethical concern 1:**

The historical crime data used to train the AI system may contain biases that perpetuate discrimination, leading to over-policing in certain communities and potential civil rights violations.

**Ethical concern 2:**

Jim Carrey might attack us with his oversized chin.

10/12/2023 22:19:29

**Feedback****Feedback:**

Good job on identifying two ethical concerns related to the use of AI in policing. However, your second concern about Jim Carrey attacking with his chin is not relevant to the scenario and detracts from the seriousness of the topic. Instead, you could have mentioned the lack of transparency and accountability in AI algorithms used for predictive policing, which can lead to mistrust and concerns about fairness. Another example could be the potential violation of privacy rights when using facial recognition technology for surveillance. Keep up the good work, but make sure to stay focused on the topic and provide relevant examples.

**Mark:**

2

**ChatGPT Feedback:**

Good job on identifying two ethical concerns related to the use of AI in policing. However, your second concern about Jim Carrey attacking with his chin is not relevant to the scenario and detracts from the seriousness of the topic. Instead, you could have mentioned the lack of transparency and accountability in AI algorithms used for predictive policing, which can lead to mistrust and concerns about fairness. Another example could be the potential violation of privacy rights when using facial recognition technology for surveillance. Keep up the good work, but make sure to stay focused on the topic and provide relevant examples.

**ChatGPT Mark:**

2



# Marking criteria

Describe two ethical concerns that people might have about the use of this type of system.

## Your Criteria

### Example

Award 0 marks for any nonsense answer. Award 0 marks if the answer is random words that make no sense. Do not award marks unless the answer is REALLY worthy of them. Provide recommendations for how the learner could improve their answer. Provide them with two examples they could consider.

A detailed answer that clearly describes only one example of an ethical concern that is specifically relevant to the use of artificial intelligence in the policing service. Ignore any answers that are nonsense or which are not relevant. Provide recommendations for how the learner could improve their answer. Provide them with another two examples they could consider.

A detailed answer that clearly describes two examples of ethical concerns that are specifically relevant to the use of artificial intelligence in the policing service. Only award 2 marks if both answers are relevant and not nonsense. Provide recommendations for how the learner could further improve their answer. Provide them with another example they could consider.

### Mark

0

1

2



Continuous evaluation throughout!

# Our approach



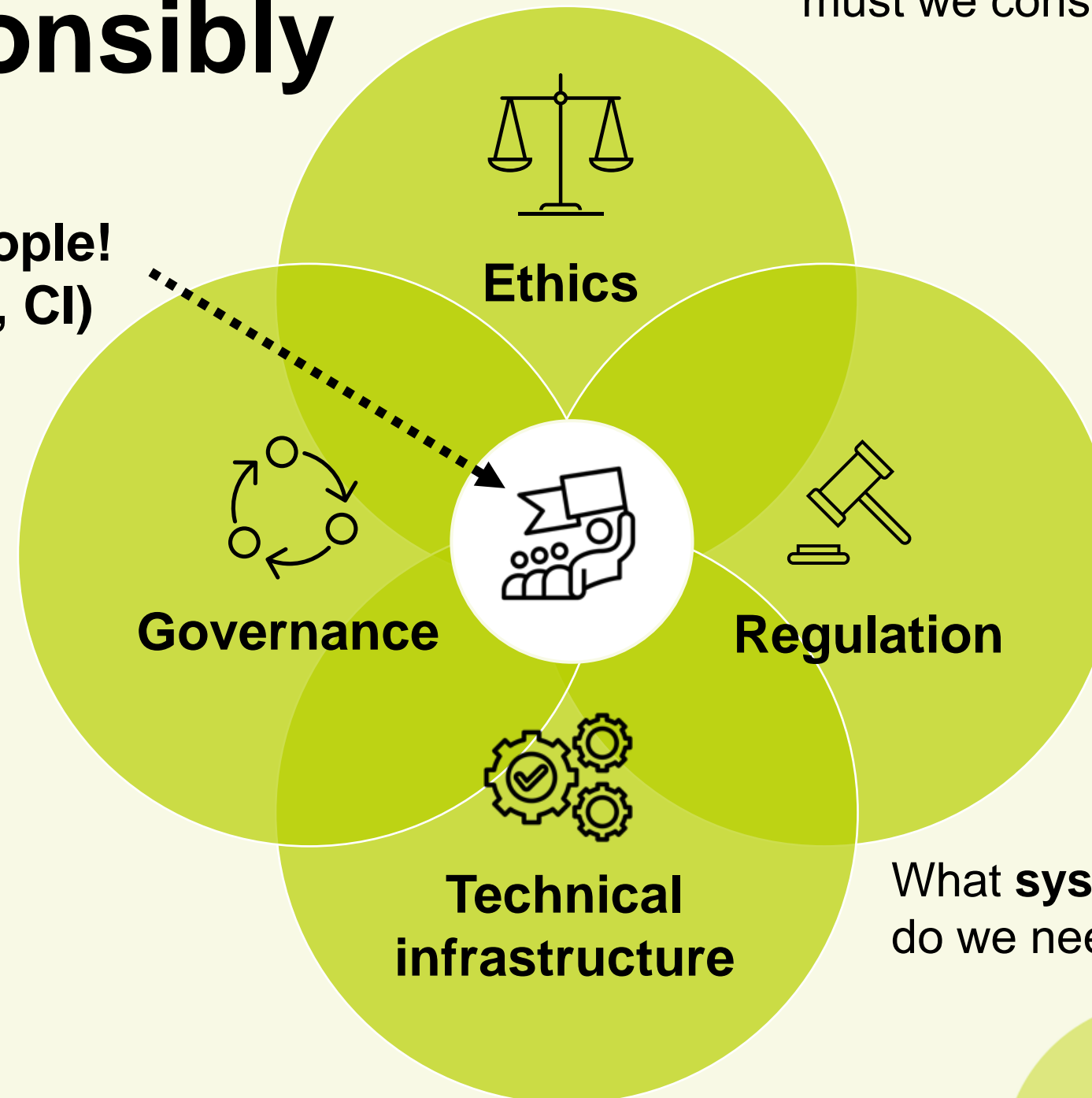
# What do you need to innovate responsibly with AI?

What **values and principles** must we consider by design?

People!  
(HI, CI)

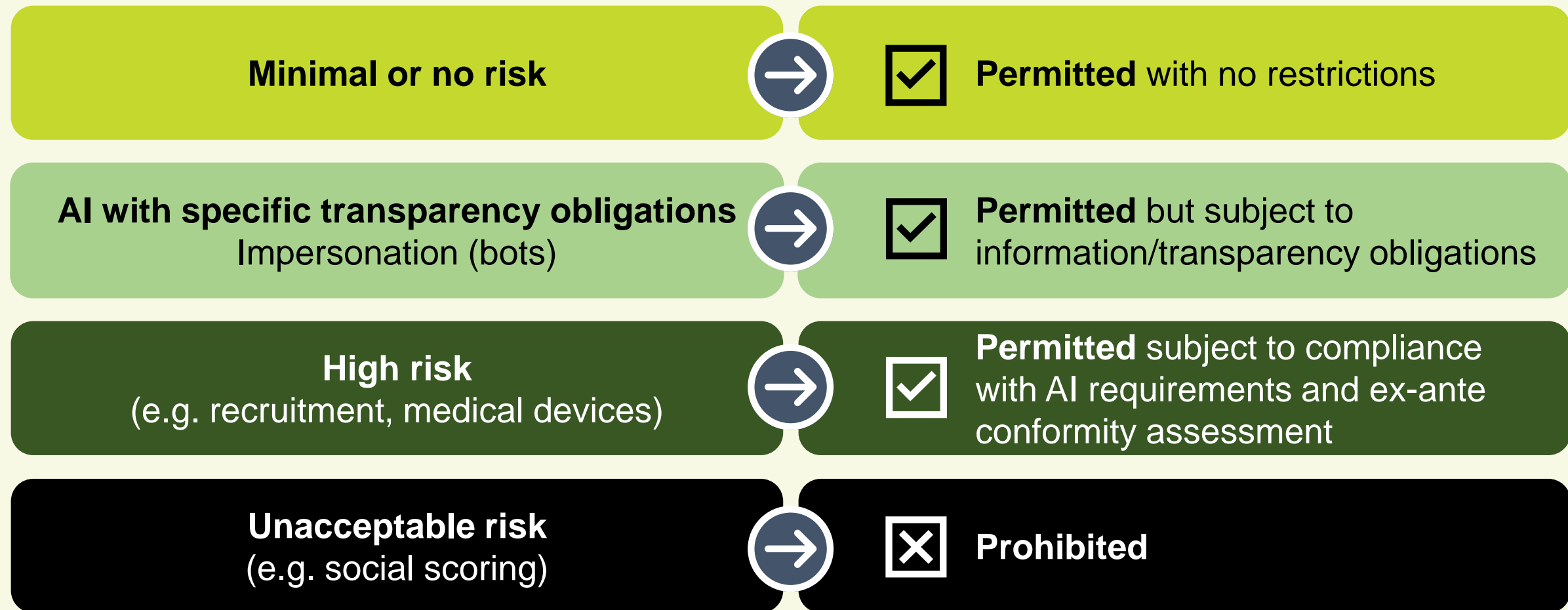
What must we comply with by **law**?

What **policies and procedures** must we have in place to follow?



What **systems and technology** do we need to have in place?

# Risk-based approach to AI regulation



# Requirements for high risk AI



Risk assessment and mitigation



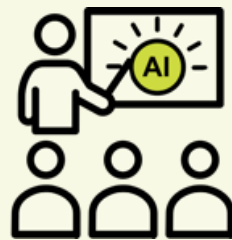
Quality datasets



Logging to ensure traceability



Detailed documentation



Use information to ensure transparency



Human oversight



Robustness, security, accuracy

*Regulatory framework proposal on artificial intelligence, European Commission, [commission.europa.eu](https://commission.europa.eu)*





# Professionalism



**competent, ethical, accountable and diverse**



# Let's keep talking

Connect with me on **LinkedIn**



# QUESTIONS?